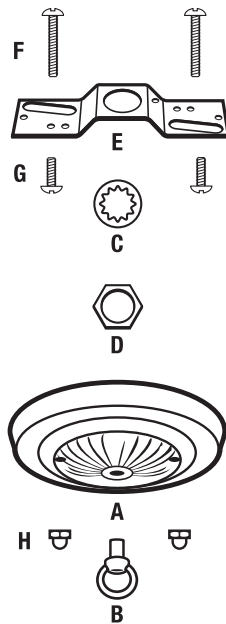


Works for Jandorf Canopy Kits:

- #60213 – 5" Rubbed Bronze Finish
- #60214 – 5" Brass Finish
- #60215 – 5" Antique Brass Finish
- #60216 – 5" Brushed Pewter Finish
- #60217 – 5" White Finish

What's Inside

- 1 – 5" Canopy (A)
- 1 – 1" Loop 1/8 IP (B)
- 1 – 1/8 IP Lock Washer (C)
- 1 – 1/8 IP Lock Nut (D)
- 1 – Offset Crossbar (E)
- 2 – 8-32 X 1" Mounting Screws (F)
- 2 – 8-32 X 1/2" Mounting Screws (G)
- 2 – 8-32 Cap Nuts (H)



What's Needed

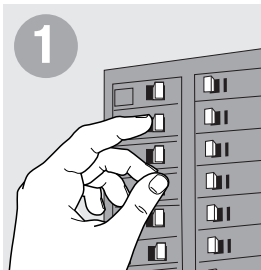
- Wire Nuts
- Screwdriver
- Wire Insulation Stripper
- Pliers

What's Its Purpose

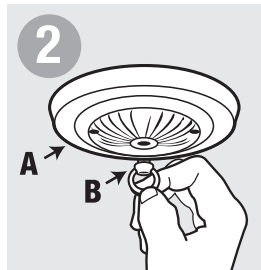
Decorative piece used to cover the outlet box and hang ceiling fixture.

Warning

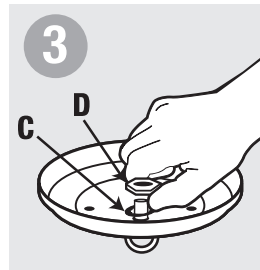
- Before beginning **TURN OFF POWER** to the light from the fuse or circuit breaker.
- Follow local electrical regulations or codes when installing and using this product.
- When installing fixture directly to outlet box, the outlet box must be capable of supporting 50 lbs. and be supported by the building structure.
- **CAUTION: RISK OF ELECTRIC SHOCK. RISK OF FIRE.**



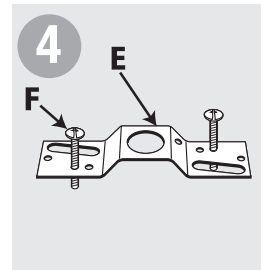
Before beginning **TURN OFF POWER** to light from fuse or circuit breaker



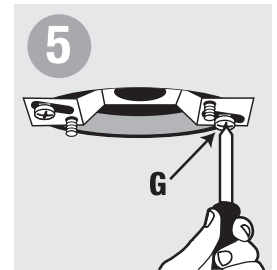
Insert loop (B) into hole from outside of canopy (A).



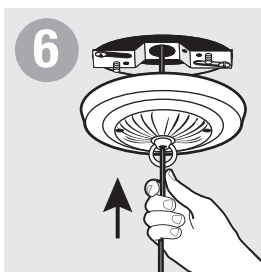
Secure from inside of canopy with washer (C) followed by nut (D). Tighten.



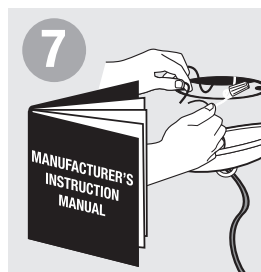
On raised side of offset crossbar (E) thread 1" mounting screws (F) down through each hole that lines up with canopy.



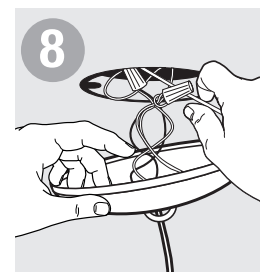
With raised side of crossbar towards ceiling, mount crossbar by inserting 1/2" mounting screws (G) through slotted holes. Tighten until crossbar is flush with ceiling.



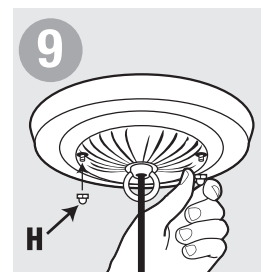
Pass wires from fixture up through hole in loop to inside of canopy.



While supporting fixture, attach wires according to manufacturer's instructions.



Continue to support fixture. Make sure all connected wires are carefully placed inside box and canopy.



Cover with canopy and secure with cap nuts (H).